



# Navajo Nation State Tribal Education Partnership

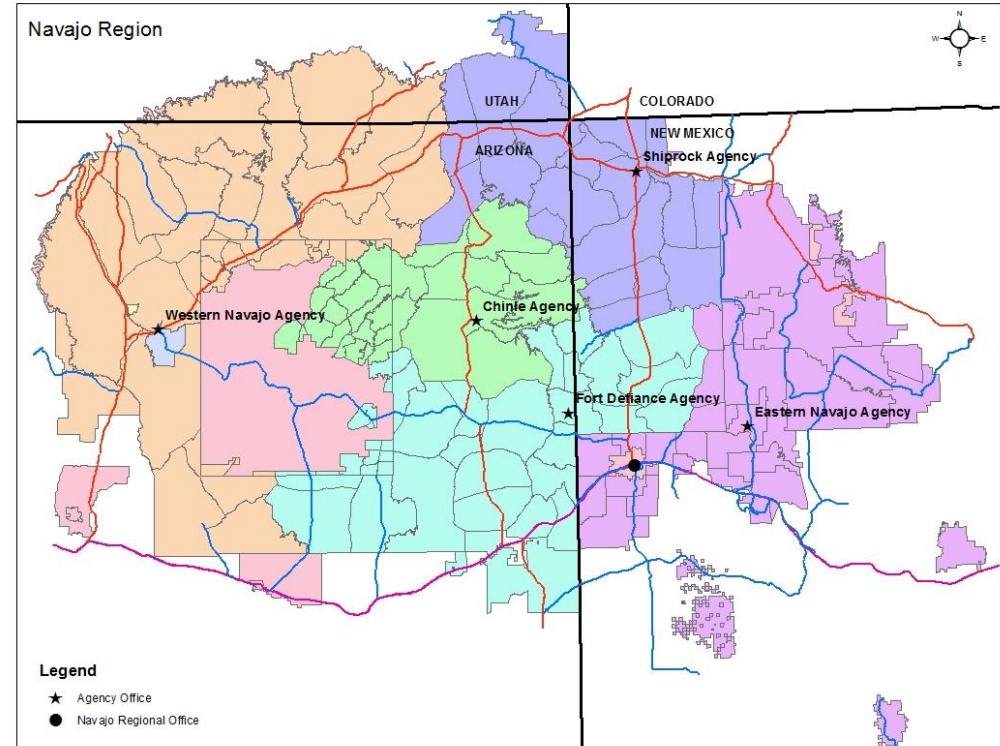
TEDNA Congressional Briefing  
Tuesday, September 16, 2014



Navajo Nation  
Department of Diné Education

# Navajo Nation Profile

- The Navajo Nation is located in Arizona, New Mexico and Utah.
- It is the largest land based reservation in the United States covering 27,673 sq. miles.
- The central government is located in Window Rock, AZ.
- The reservation is divided into five agencies: Chinle, Crownpoint (Eastern), Fort Defiance, Shiprock, Tuba City (Western).
- There are 110 Chapters.





# Navajo Nation Demographics

## Census 2010 Data

Total Population: 173,667

Males: 85,316 (49.1%)

Females: 88,351 (50.9%)

<18 years: 57,310 (33%)

18 to 64 years: 98,990 (57%)

65+ years: 17,367 (10%)

Median Age: 28.5

Median Household Income:  
\$27,389

# Navajo Nation Student Profile

Table 1: 2012-13 Navajo Nation Student Enrollment by School

Type <b>2012-13 Student Enrollment</b> Schools located on the Navajo Nation Provided by the Office of Educational Research & Statistics			
School Type	# of Schools	Enrollment	%
Arizona Public Schools (including Charter Schools)	48	15,019	39.4%
New Mexico Public Schools	26	7,010	18.4%
Utah Public Schools	5	1,027	2.7%
BIE Schools	31	8,079	21.2%
Grant Schools	29	6,974	18.3%
Private Schools*	0*	0*	0.0%
<b>Total</b>	<b>139</b>	<b>38,109</b>	<b>100.0%</b>
Residential Halls	8	879	

Public Schools account for 60.5% of the student population on the Navajo Nation, which is equivalent to 23,056 students.

\*Not included

<b>Navajo Nation STEP School Districts</b> 2012 School Year Student Enrollment		
District	# of Schools	Enrollment
Central Consolidated School District	11	<b>3,883</b>
Gallup-McKinley County Schools	14	<b>3,266</b>
<b>Total</b>	<b>25</b>	<b>7,149</b>

# Partners

## New Mexico Public Education Department

DeAlva Calabaza, General Manager  
Frances Vigil, Education Administrator  
Vern Bia, Education Administrator

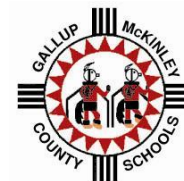


## Central Consolidated School District

Don Levinski, Superintendent  
Pandora Mike, Assistant Superintendent  
Dr. Wynora Bekis, Director

## Gallup-McKinley County Schools

Frank Chiapetti, Superintendent  
Pauletta White, Associate Superintendent  
Carmen Moffett, Director



Navajo Nation  
Department of Diné Education

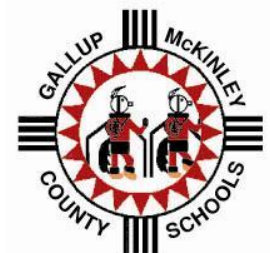
# STEP Final Agreement with SEA

- The Final Agreement was signed on June 21, 2013 between the New Mexico Public Education Department (NMPED) and the Navajo Nation Department of Diné Education (DODE).
- Two Objectives
  - 1: Identify challenges that Navajo student learning through the collection of accurate and real-time student level data information related to student data.
  - 2: Provide professional development to in-service and pre-service teachers in the areas of language and culture, cultural competency, and development of relevant curriculum that is tied to the common core standards.



# STEP Final Agreement with LEAs

- Includes collaborating with two LEAs
  - Central Consolidated School District (CCSD)
  - Gallup McKinley County School District (GMCS D)
- Each School District agreed to house a Senior Statistical Research Analyst (SSRA) to collect, maintain and analyze data.
- School districts also provided SSRAs with student, teacher and school level data, which was identified in a Data Sharing Agreement.



# Significant Progress

- Establish partnerships with two (2) LEAs.
- Update and modify Data Sharing Agreement (MOU) with NMPED to include STEP data variables.
- Plan and implement Parental Involvement Workshops with each school districts.
- Working with LEAs to provide information on the Navajo language and culture.
- Collect, merge and analyze student data obtained from school districts.



# Major Accomplishments

- Collaborate with NMPED, CCSD, GMCSO to host two Parental Involvement Conferences (September 2014).
- Host 2014 Educational Research and Cultural Infusion Conference in Albuquerque, NM (September 2014).
- Create lasting partnerships and collaboration with the SEA and LEAs.

# Recommendations

- Have quarterly STEP grantee meetings to discuss project ideas (i.e. goals, collaboration, suggestions).
- Inform grantor of the various processes of tribal government. Have grantors visit the grantee to see first hand the interworking's of the tribe.
- Create innovative ways of communicating program goals and objectives to all stakeholders and creative ways of engaging parents and teachers.

# Access to Student Records

- Identify and quantify the factors for student success/failures.
- Identify the grade level where students encounter academic problems and begin academic intervention.
- Understand the impact of academic programs currently being used in public schools.
- Improve our understanding of the mobility trends as students move from BIE funded or Grant/Contract schools to NM public school.
- Identify Navajo students participating in Navajo language and cultural courses and their performance.
- Establish baseline demographic data of Native and non-Native teachers working in schools on the Navajo Nation.

# Future/Next Steps

- Continue to build partner and collaborate with school districts.
- Begin in-depth analysis of student, teacher and school level data.
- Begin final report that includes findings from analysis.
- Develop baseline data for all student, teacher and school data.
- Present final report to all stakeholders.
- Begin sustainability activities to continue and progress STEP goals and objective.

# Contact Information

- Calvin White, Education Administrator (DODE)

Email: [kalvinwhite@nndode.org](mailto:kalvinwhite@nndode.org)

Phone: (928) 871-7448

- Duane L Reeder, STEP Project Director

Email: [duanereeder@nndode.org](mailto:duanereeder@nndode.org)

Phone: (928) 871-7493

- Christopher Bahe, Office Specialist

Email: [christopherbahe@nndode.org](mailto:christopherbahe@nndode.org)

Phone: (928) 871-6065